

CABLE TRANSITION ARMATURES

KD 4/70 T, KD 7/100 T AND KD 12/100 T

Electrical cables are routed under the water surface in all types of pools via cable transition armatures, in a manner that keeps cable transitions waterproof and invisible.

Armatures consist of the housing, the flange plate, the seals, and cable glands.

They are mounted on the end of the cable protection pipe that leads from the switchgear to the water pool. The connection ducts of the larger transitions are inserted in the muffs of the cable protection pipes and cast in the concrete. Smaller transitions have a pipe thread and are screw fastened to the PE pipe.

All armatures have bores for connection to the equipotential bonding.

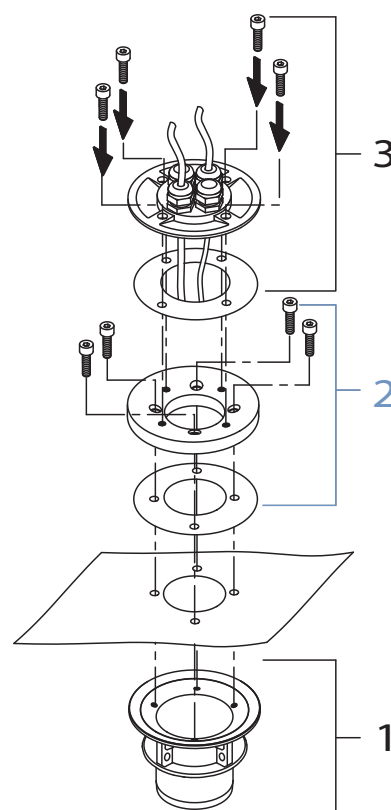
1 The concrete part is the basis of every configuration. Available for DN 70 and/or DN 100 pipes.

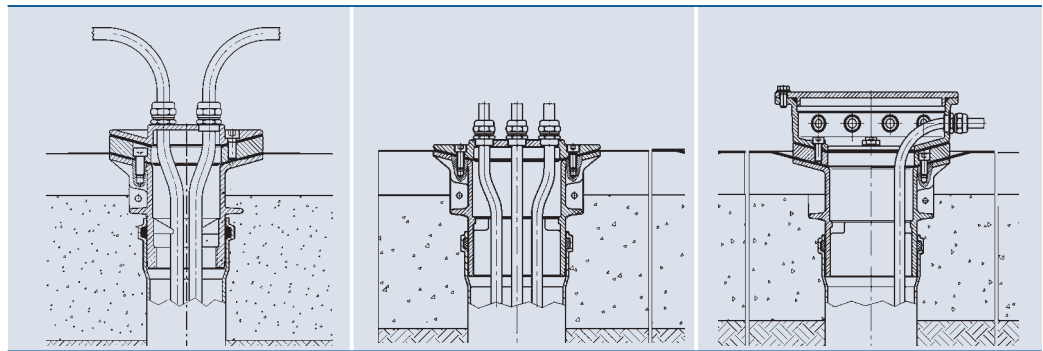
2 The clamping flange for fastening with or without liner. Products without cable transitions are listed on page 134.

3 Depending on the requirement a decision is made at this point concerning the specific implementation: Plug, sieve, overflow or level regulator.

Product characteristics at a glance

- Elegant and professional connection to cable protection pipes
- Suitable for any type of water pool
- Some units are suitable for liner
- Plug connection for connecting to the KG channel pipe or ED house installation pipe
- Threaded union for connecting to PE pipes

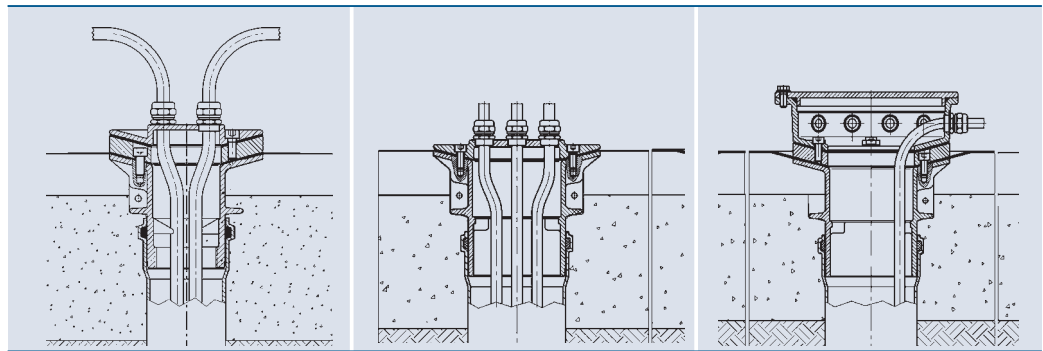








<h1>3</h1>			
	KD 4/70T	KD 7/100T	KD 12/100T
Dimensions (ø x H) [mm]	150x50	190x50	230x70
Designation	cable transition	cable transition	cable transition
Number of cable connections	4	7	12
DN	70	100	100
Material	tombac	tombac	tombac
Weight [kg]	1.1	1.9	5.5
Order no.	57470	57464	57465



<h1>2</h1> (optional)		
	FK 70T KD	FK 100T KD
Dimensions (ø x H) [mm]	150x25	190x40
Designation	liner clamping flange KD	liner clamping flange KD
DN	70	100
Material	tombac	tombac
Weight [kg]	2.0	2.9
Order no.	57473	57474

<h1>1</h1>		
	B 70 T	B 100 T
Dimensions (ø x H) [mm]	70x110	100x141
Designation	concrete part	concrete part
DN [mm] / [inch]	70 / 2"	100
Material	tombac	tombac
Weight [kg]	2.1	3.2
Order no.	57471	57467



<h1>3</h1>			
	KD 4/70T	KD 7/100T	KD 12/100T
Dimensions (ø x H) [mm]	150x50	190x50	230x70
Designation	cable transition	cable transition	cable transition
Number of cable connections	4	7	12
DN	70	100	100
Material	tombac	tombac	tombac
Weight [kg]	1.1	1.9	5.5
Order no.	57470	57464	57465

<h1>2</h1> (optional)		
	FK 70T KD	FK 100T KD
Dimensions (ø x H) [mm]	150x25	190x40
Designation	liner clamping flange KD	liner clamping flange KD
DN	70	100
Material	tombac	tombac
Weight [kg]	2.0	2.9
Order no.	57473	57474

<h1>1</h1>		
	B 70 T	B 100 T
Dimensions (ø x H) [mm]	70x110	100x141
Designation	concrete part	concrete part
DN [mm] / [inch]	70 / 2"	100
Material	tombac	tombac
Weight [kg]	2.1	3.2
Order no.	57471	57467